

Delivering total power infrastructures worldwide for IBM



EATON

Powerware

-
- Who is Powerware?
 - Customized Solutions for IBM
 - Full range of single-phase UPS
 - Full range of three-phase UPS
 - HotSync paralleling technology
 - Software and Connectivity
 - World-class Service
 - Summary

Who is Powerware?



Powerware

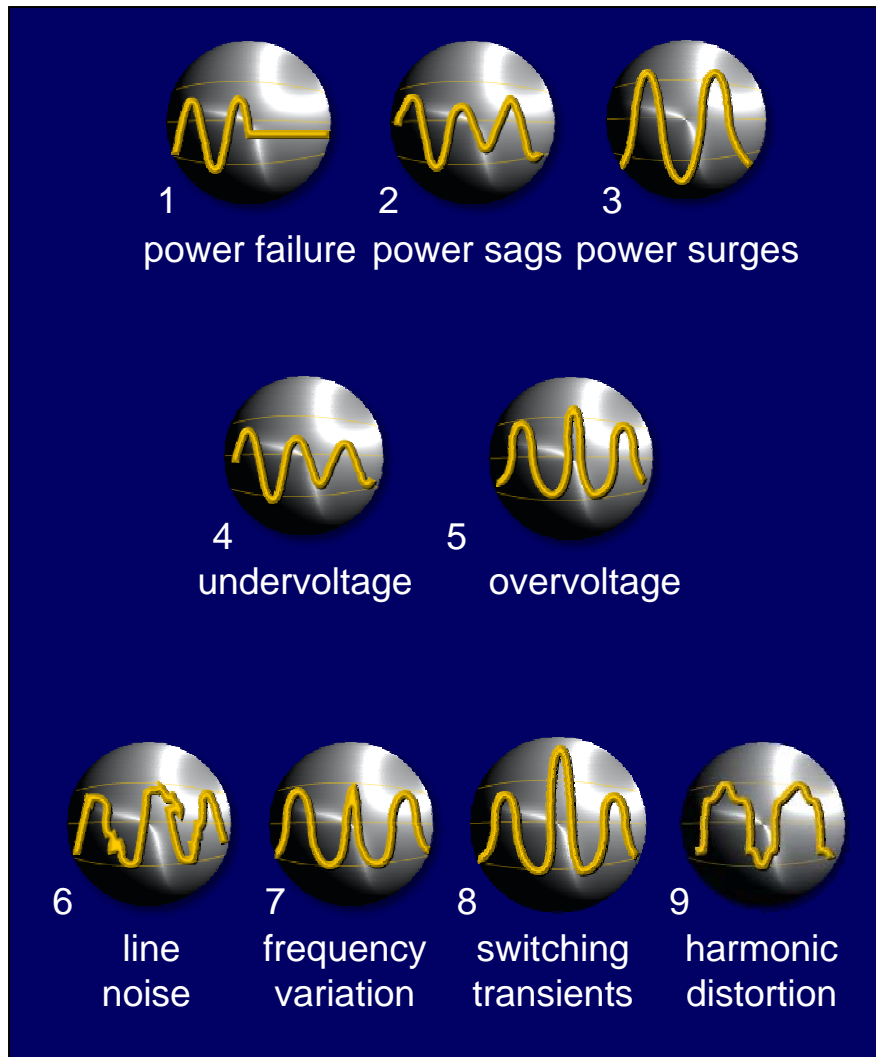
- Powerware is an industry leader and globally recognized provider of innovative, effective power quality solutions
- Powerware boasts almost 20 years of strategic OEM partnership with IBM in providing custom-designed and off-the-shelf UPSs and power management solutions



Power Protection as Easy as...3,5,9



Powerware



Powerware Series 3

Protects against at least 3 of the 9 power problems
Single-phase, Offline
desktop, LANs, PBXs

Powerware Series 5

Protects against at least 5 of the 9 power problems
Single-phase, Line-Interactive
LANs, PBXs, server farms

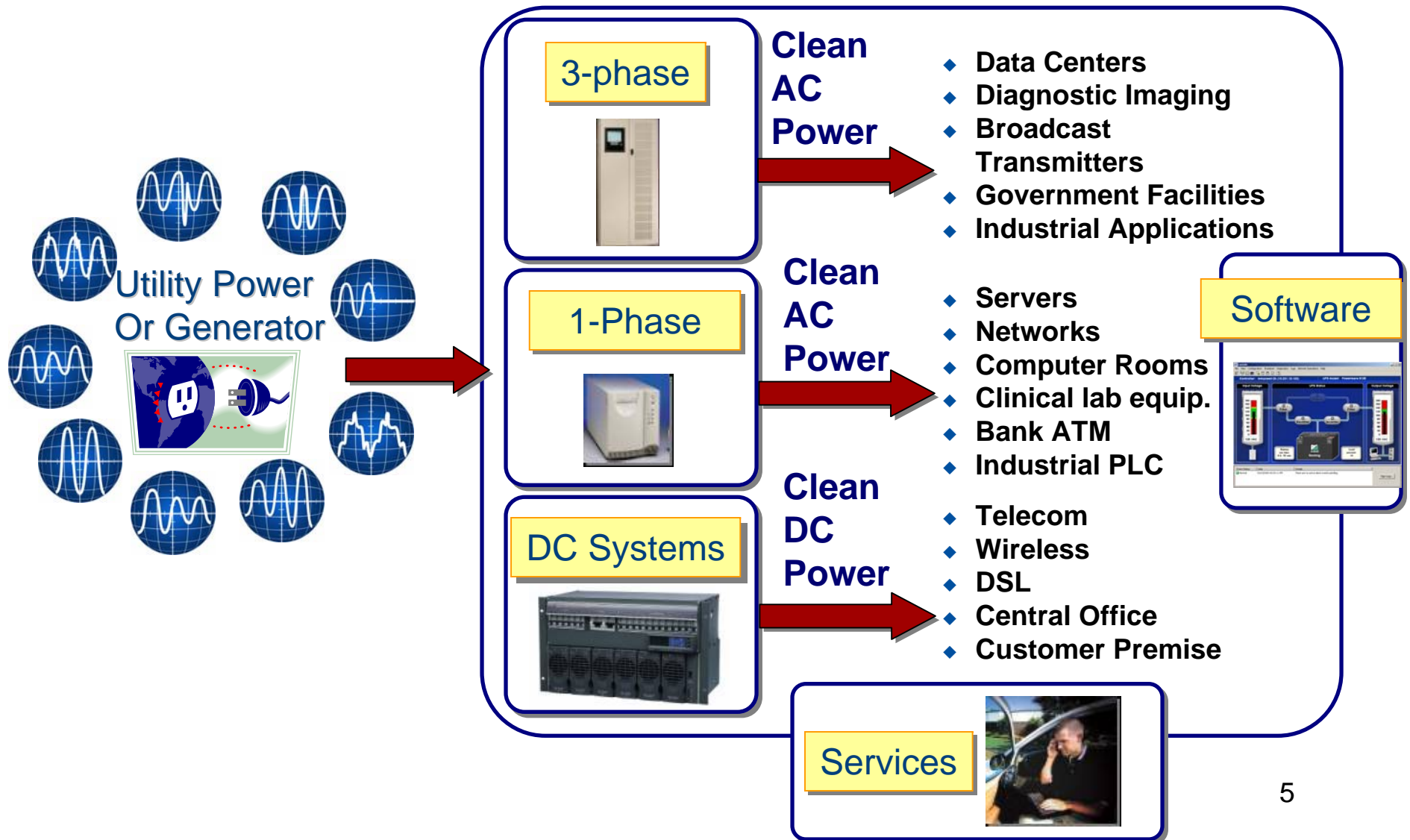
Powerware Series 9

Protects against all 9 power problems
Single-phase, Online and
Three-phase, Online
server farms, data centers,
switching centers

Powerware Offering



Powerware



9910 UPSs

- Pre-architected, tested and optimised for eServer and TotalStorage applications



Power Distribution Units

- Extremely scalable
- Speeds installation and reduces cabling complexities



What Sets Powerware Apart? | **Powerware**

- Powerware UPSs feature higher power density at any comparable VA rating
- ABM[®] technology doubles battery service life
- Load Segment control allows individual shutdown and startup schedules to preserve battery power for the most critical applications
- Remaining battery runtime guaranteed through LanSafe
- Originator of SNMP Web technology currently offering 4th generation products vs. competitor's 1st and 2nd generation offering

Full Range of Single-Phase UPS



Powerware

- 300 VA to 18 kVA UPSs to protect sensitive electronic equipment from a desktop to vast data centers
- Wide range of stealth black UPSs to match IBM systems
- Advanced Battery Management (ABM[®]) technology doubles battery service life
- Extended battery modules prolong backup time and ensure uptime
- Load segment control



Full Range of Single-phase UPS



Powerware



3110

300 to
700 VA



5115

500 to
1400 VA



5125

1000 to
2000 VA



9120

700 to
3000 VA



9125

700 to
3000 VA



9170+

N+X power and
logic redundancy
3 to 18 kVA



3115

300 to
650 VA



5115RM

1U height
500 to
1400 VA



5125

2-in-1 form
factor
1000 to
3000 VA



P33



P11/P16



9125

5000 and
6000 VA

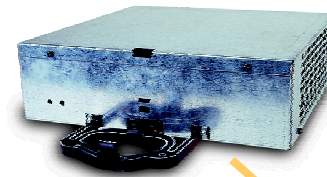


Modular Powerware 9170+



Powerware

- Scalable battery and power module configuration allow UPS to adapt to changing IT environment
- Each 3 kVA power module contains its own logic (unlike competitive systems that separate cards), allowing true N+X power and logic redundancy
- If a power module is removed from service or fails, the remaining module(s) immediately provide power and share the load
- Increase battery runtime by adding internal battery modules to base UPS cabinet or adding an external battery cabinet
- Hot-swappable batteries minimize downtime



9170+ as seen in mobile centre



Full Range of Three-Phase UPS



Powerware



- 10 kVA to over 4000 kVA
- Unique Hot Sync[®] paralleling system provides redundancy and capacity capability with system availability of 99.9999% and greater
- N+1 redundancy delivers unmatched reliability
- Extended battery runtime options ensure uptime
- Complete power train solutions from a single source

Full Range of Three-phase UPS



Powerware



9150

1ph / 1ph

8kVA
10kVA
12kVA

9150

3ph / 1ph

8kVA
10kVA
12kVA
15kVA



9305

3ph / 3ph

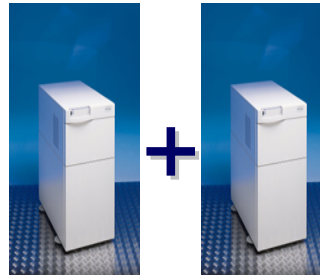
7.5kVA
10kVA
12kVA
15kVA



9305

3ph / 3ph

20kVA
30kVA
40kVA
50kVA
60kVA



9305

Parallel
Redundancy
3ph / 3ph

7.5kVA
10kVA
12kVA
15kVA



**9340+9305
+ 9370**

Parallel
Capacity Hot-
Sync
(up to 4
modules)
3ph / 3ph

20kVA
30kVA
40kVA
50kVA
60kVA

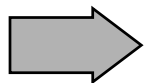
Single Module



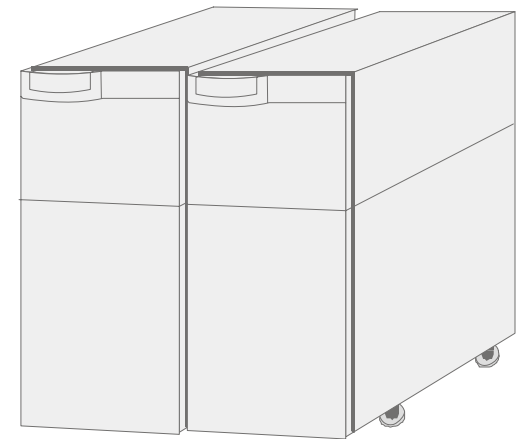
Multi-Module



- Unmatched system for paralleling 2 UPSs for redundancy
- The most reliable UPS topology in the world
 - Reliable operation w/o control wirings between UPS modules
 - No Single point failure
 - Automatic load share routine
- Patented Controlling system

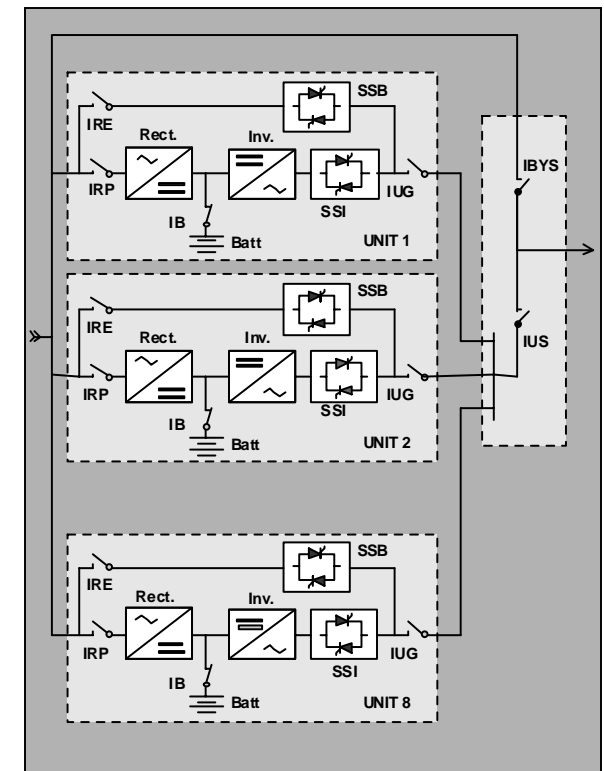


Extremely high reliability



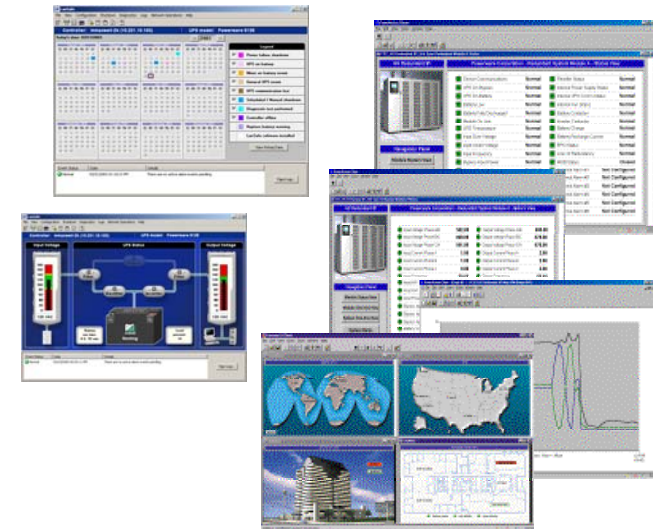
Parallel Configuration

- Up to a maximum of 8 units parallelable
 - not necessary for all units to be of the same kVA rating
- Control and regulation of the inverters by only one additional pcb in each unit
- Paralleling of any number of bypasses is inherent within the control
- The units share the load at all times
- Every unit is identical, all control is completely independent of the other units
- No single-point failure



- **Software:**

- LanSafe for network shutdown and power management
- Powervision for enterprise-wide UPS monitoring and data analysis
- DataTrax Foreseer for proactive management of power, environmental, and life/safety systems

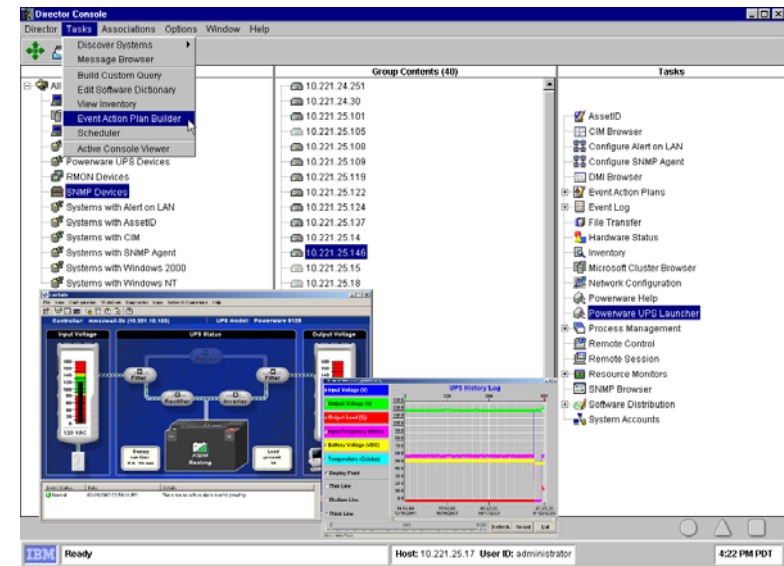


- **Connectivity products:**

- Web/SNMP card for integration into the network, Internet, and SNMP management systems
- Modbus card for integration with building management systems
- Modem and MultiServer cards for special applications and out-of-band communications
- Serial, USB, and Relay cards for basic and advance computer connections'
- Expansion chassis provides a dynamic extension method



- Seamless UPS and software integration into IBM Director Network
- Real time monitoring, management and alarm notification of all UPSs in the network: e.g. battery status, battery replacement, load level and metering information
- Automatically launches LanSafe and ConnectUPS Web/SNMP Card applications from within Director



Software and Connectivity



Solution	zSeries	iSeries	pSeries	xSeries	Storage	Networking
LanSafe software			✓	✓		
LanSafe software & ConnectUPS MultiServer card			✓	✓		
NetWatch software & ConnectUPS Web/SNMMP card	✓		✓	✓	✓	✓
IBM Director Snap-in				✓	✓	✓
PowerVision software	✓		✓	✓	✓	✓
FORESEER software	✓		✓	✓	✓	✓
ConnectUPS relay card & AS/400 cable		✓				

- **Equipment serviced**
 - UPS, DC, batteries and ancillary equipment
- **System Integration**
 - Design, engineering, installation and project management
- **Global Services Infrastructure**
 - 24x7 Service Operations and Call Center



Place your confidence in Powerware

- a long history of technology leadership to give you the best protection
- the most complete line of hardware and software products to fit your needs
- a world-class services organization to provide you the peace of mind

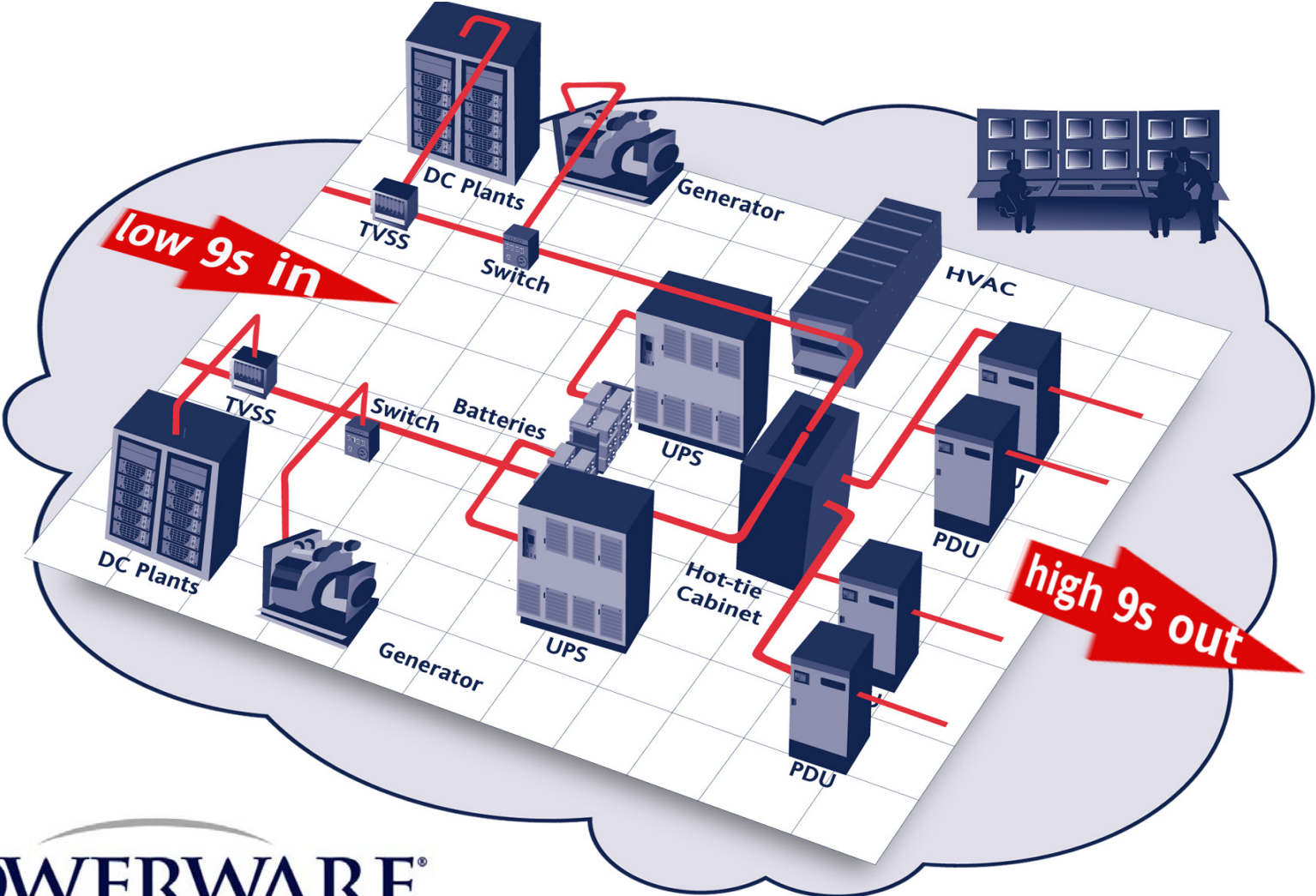
Powerware UPS Hotline for IBM

Tel: +44 (0) 845 177 3410

Email: IBM.UPS@powerware.com

Website: www.powerware.com/ibm

Powerware delivers availability in the high-9's



POWERWARE[®]