

Maintenance Bypass Module (MBM) for Eaton 9315



Eaton is pleased to offer the new Maintenance Bypass Module for the Eaton 9315 product line. The MBM ensures simple and reliable bypass power delivery to critical loads when servicing or testing UPS equipment.

Available for reverse transfer or parallel redundant system configurations, your critical load is supported by the best available in power protection. With more than 40 years experience in designing and building high-end, innovative UPS solutions, Eaton understands the need to deliver the ultimate in power protection and value.

Environmental Specifications

Ambient Temperature	0°C to +40°C
Storage	-20°C to +70°C
Relative Humidity	5-95% non-condensing
Altitude	1500 meters (5500ft.) at 40°C ambient temperature without load derating
Audible Noise	Less than 50 dBA at 1 meter; in accordance with ISO 7779

Features

- 65 KAIC, 100% continuous current rated molded case circuit breakers, with microprocessor controlled trip units, and auxiliary contacts
- Electrical interlocking between UPS and bypass sources
- Convection cooled cabinet with swivel casters, transfer sequence label, and print pocket
- 200% rated neutral bus.
- UPS protected 120 VAC receptacle (NEMA 5-15R)

Optional features available:

- Bypass Input Breaker (BIB) for single module applications
- Dual Bypass Input Breakers (BIB1/BIB2) for parallel redundant module applications
- Kirk key Interlocking between UPS and bypass sources
- Auto or isolation transformer optional for 480/208 and 600/208 volt applications

General Specifications

Input & Output Power Cabling

Top and bottom entry typical

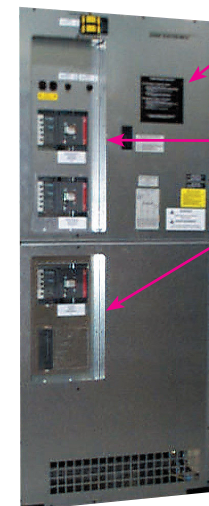
Top entry only for voltage conversion models

Line-up and match harnessing is available for typical configurations up to 160 kVA

Safety

UL1778 Listed

Internal Front View



Transfer sequence label

Standard electrical interlocking

Optional BIB1 and BIB2 MCBs

Extended front view w/kirk key option



Bypass ready and release controls

120 VAC convenience outlet

65KAIC 100% rated circuit breakers with adjustable micro trip units

Optional kirk key interlocks

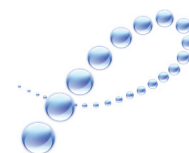
EATON

Powering Business Worldwide

EATON 9315 MBM PERFORMANCE CHARACTERISTICS

Model Numbers	Vin/Vout	Hz	In/Out	MBP & MIS FRM/TRP	BIB1/BIB2 FRM/TRP	Dimensions HxWxD	Installed Weight lbs	Efficiencies @100% Load	BTU/Hr. (x1000)	Full Load Heat	
										Dissipation Kcal/Hr. (x1000)	
9315-200	200 KVA	400V/400V	50/60	290A/290A	400A/320A	400A/320A	73.5x34x31.5	850	100%	0	0
9315-225	225 KVA	208V/208V	60	625A/625A	800A/640A	800A/640A	73.5x34x31.5	930	100%	0	0
		480V/208V	60	271A/625A	800A/640A	800A/640A	73.5x49.3x31.5	2605	98%	12.545	3.162
9315-250	250 KVA	400V/400V	50/60	360A/360A	400A/380A	400A/380A	73.5x34x31.5	850	100%	0	0
9315-300	225 KVA	600V/600V	60	217A/217A	400A/240A	400A/240A	73.5x34x31.5	850	100%	0	0
		600V/208V	60	217A/625A	400A/240A	400A/240A	73.5x49.3x31.5	2525	98%	12.545	3.162
	480V/480V	60	271A/271A	400A/280A	400A/280A	73.5x34x31.5	850	100%	0	0	
	480V/208V	60	271A/625A	400A/320A	400A/320A	73.5x49.3x31.5	2525	98%	12.545	3.16	
	300 KVA	600V/600V	60	289A/289A	400A/320A	400A/320A	74x34x31.5	850	100%	0	0
		600V/208V	60	289A/625A	400A/320A	400A/320A	73.5x49.3x31.5	2525	98%	16.727	4.215
		480V/480V	60	360A/360A	400A/380A	400A/380A	73.5x34x31.5	850	100%	0	0
		480V/208V	60	360V/833A	400A/400A	400A/400A	73.5x49.3x31.5	2525	98%	16.727	4.215
9315-400	400 KVA	480V/480V	60	481A/481A	600A/540A	600A/540A	73.5x34x31.5	850	100%	0	0
9315-500	500 KVA	480V/480V	60	600A/600A	400A/240A	600A/600A	73.5x34x31.5	850	100%	0	0

● This line also applies to 380V/380V and 415V/415V.



PowerChain Management®

UNITED STATES
8609 Six Forks Road
Raleigh, NC 27615 U.S.A.
Toll Free: 1.800.356.5794

www.eaton.com/powerquality

CANADA
Ontario: 416.798.0112
Toll free: 1.800.461.9166

LATIN AMERICA
Argentina: 54.11.4124.4000
Brazil: 55.11.3616.8500
México: 52.55.9000.5252

EUROPE/MIDDLE EAST/AFRICA
Denmark: 45.3686.7910
Finland: 358.94.52.661
France: 33.1.6012.7400
Germany: 49.0.7841.604.0
Italy: 39.02.66.04.05.40
Norway: 47.23.03.65.50
Portugal: 55.11.3616.8500
Sweden: 46.8.598.940.00
United Kingdom: 44.1753.608.700

ASIA PACIFIC
Australia: 61.2.9693.9366
New Zealand: 64.0.3.343.3314
China: 86.21.6361.5599
HK/Korea/Taiwan: 852.2745.6682
India: 91.11.2649.9414 to 18
Singapore/SEA: 65.6825.1668

Eaton, PowerChain Management is a trade name, trademark, and/or service mark of Eaton Corporation or its subsidiaries and affiliates.

All other trademarks are property of their respective owners.

©2009 Eaton Corporation
All Rights Reserved
Printed in USA
PLS29FXA
February 2009