

LIEBERT NX BATTERY CIRCUIT BREAKER BOX

Installation Instructions



Installation

The Liebert Battery Circuit Breaker box is required to protect the battery from overcurrents. It also provides electrical isolation between the UPS and the battery, permitting personnel to reduce the risks involved in maintenance work to a minimum.

Two battery circuit breaker boxes, which differ only in switch capacity, are available for installations where the battery is not installed in the battery cabinet. In those cases, the appropriate battery box is fitted as close as possible to the battery and connected to the UPS as shown in illustration on page 2. The separate circuit breaker box contains the same battery isolating circuit breaker as is mounted in the battery cabinet.

A separate safety earth must be connected between the UPS unit and circuit breaker box.

Two boxes are available, depending on the UPS power rating:

Batterycircuit breaker box dimensions, switch capacity

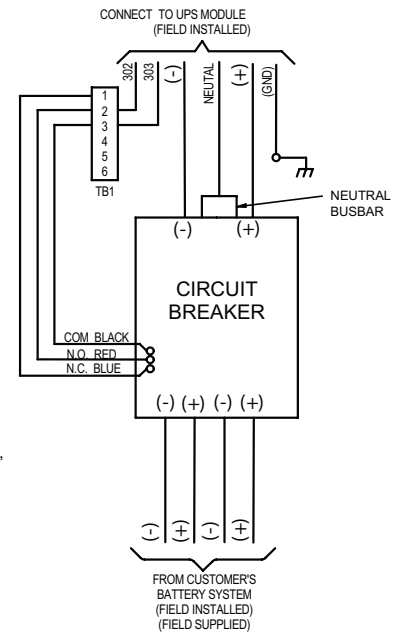
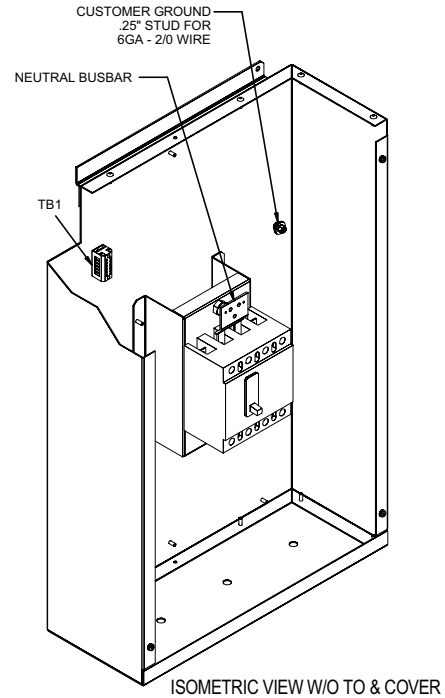
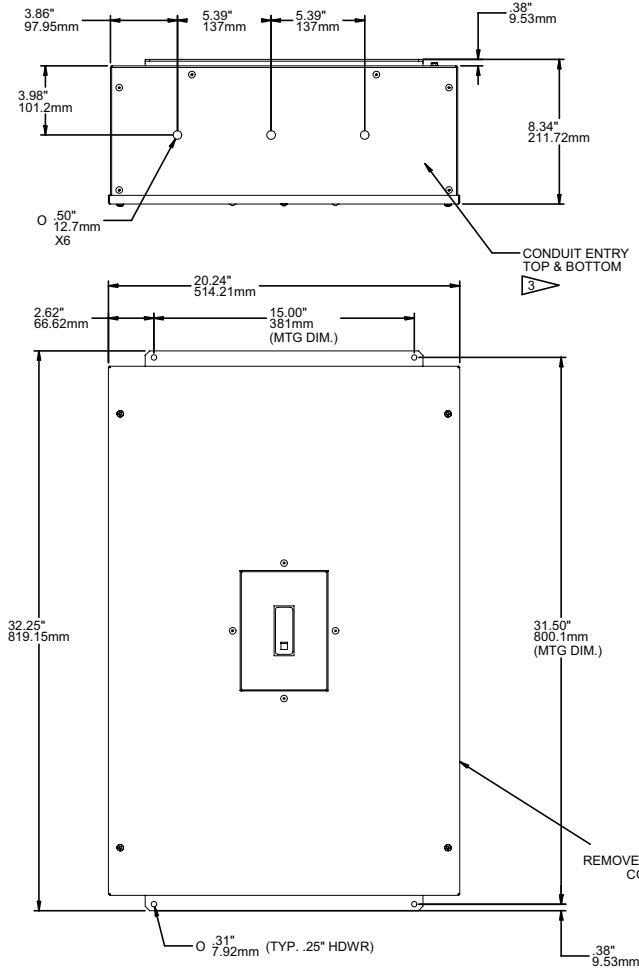
UPS	Dimensions, in. (mm) H-W-D	Circuit Breaker
10-15 kVA	32-1/4 x 20-1/4 x 8-1/3 (819.2x514.4x210.8)	70A
20-30 kVA		125A

Description

The circuit breaker has the following features:

- Short-circuit protection
- Protection against battery cabinet and UPS connection errors (polarity reversal +/-).

Battery circuit breaker box connections—70A and 125A



1. HARDWARE FOR CONNECTING CABLES TO THE BREAKER SUPPLIED.
2. "TYPE-1" RATED ENCLOSURE.
3. LOW VOLTAGE WIRING NEEDS TO ENTER THIS BOX FROM THE TOP.
4. DC OUTPUT POWER CONNECTIONS WILL ACCEPT (2) POSITIVE AND (2) NEGATIVE WIRES, ACCEPT 2GA.
5. DC INPUT CONNECTION WILL ACCEPT 2GA WIRE FOR 10 -15KVA UPS WITH 70A BREAKER, OR 20-30KVA UPS WITH 125A BREAKER.



NOTE

1. The signal cables in this figure must be shielded and double-insulated.
2. Connect the Pes (Protection Earth) of the UPS cabinet and BCB box to the same point.



Liebert Corporation
1050 Dearborn Drive
P.O. Box 29186
Columbus, OH 43229

Telephone: 1-800-877-9222
Facsimile: 1-614-841-6022
www.liebert.com



© 2004 Liebert Corporation
All rights reserved throughout the world. Specifications subject to change without notice.

® Liebert and the Liebert logo are registered trademarks of Liebert Corporation. All names referred to are trademarks or registered trademarks of their respective owners.

SL-25245 (9/04) Rev. 0