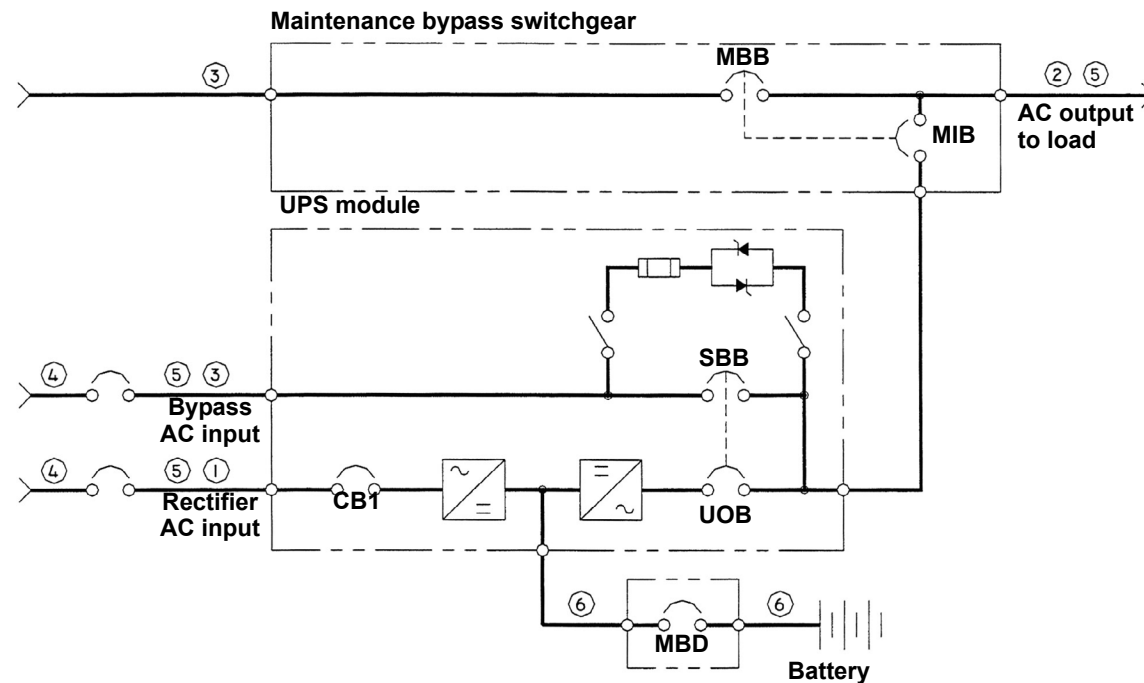


SITE PLANNING DATA, SERIES 610, 1000KVA, SINGLE-MODULE SYSTEMS



Notes for Tables 1 and 2

- Nominal rectifier AC input current (considered continuous) is based on full rated output load. Maximum current includes nominal input current and maximum battery recharge current (considered noncontinuous). Continuous and noncontinuous current limits are defined in NEC 100. Maximum input current is controlled by current limit setting, which is adjustable. Values shown for maximum settings are 125% of nominal input current. Standard factory setting is 115%.
- Nominal AC output current (considered continuous) is based on full rated output load. Maximum current includes nominal output current and overload current for 10 minutes.
- Bypass AC input current (considered continuous) is based on full rated output load.
- Feeder protection (by others in external equipment) for rectifier AC input and bypass AC input is recommended to be provided by separate overcurrent protection devices.
- UPS output load cables must be run in separate conduit from input cables.
- Power cable from module DC bus to battery should be sized for a total maximum 2.0 volt line drop (power cable drop plus return cable drop as measured at the module) at maximum discharge current.
- Grounding conductors to be sized per NEC 250-95. Neutral conductors to be sized for full capacity—per NEC 310-16, Note 10—for systems with 4-wire loads and half capacity for systems with 3-wire loads.
- Rectifier AC Input: 3-phase, 3-wire, plus ground
AC Output to Load: 3-phase, 3- or 4-wire, plus ground
Bypass AC Input: 3-phase, 4-wire, plus ground (3-wire in some circumstances)
Module DC Input from Battery: 2-wire (positive and negative), plus ground
- All wiring is to be in accordance with National and Local Electrical Codes.
- Minimum overhead clearance is 2 ft. (0.6m) above the UPS.
- Top or bottom cable entry through removable access plates. Cut plate to suit conduit size.
- Control wiring and power cables must be run in separate conduits. Control wiring must be stranded tinned conductors.
- 4% maximum reflected input harmonic current and 0.92 lagging input power factor at full load with optional 12-pulse rectifier and optional input filter.
- UPS module will be shipped in sections. Reconnect shipping splits according to drawings supplied with the equipment.

Table 1 Site planning data—600V input

UPS Rating		AC Output Voltage	Options	Bypass AC Input Current	Rectifier AC Input Current		Inverter or Bypass AC Output Current		Required Battery Disconnect Rating (A)	Max. Battery Current at End of Discharge (A)	% Efficiency at Full Load	Max. Heat Dissipation Full Load BTU/h (kWH)	Dimensions	Approx. Weight Unpacked	Floor Loading Distributed Loading
kVA	kW	VAC	Input Filter	Nom	Nom	Max	Nom	Max							
1000	900	600	No	962	1096 *	1369	962	1203	2500	2440	93	231,203 (67.7)	177x44x82 (4496x1118x2083)	16700 (7575)	309 (1509)
1000	900	600	Yes	962	1012 **	1265	962	1203	2500	2440	93	231,203 (67.7)		17550 (7961)	325 (1587)
See Notes (p. 1):			13	3,5,7,8,9,11,12	1,4,5,7,8,9,11,12		2,5,7,8,9,11,12		6	6,8,9,11,12	—	—	14	14	—

* Nominal Input Power Factor 0.85 lagging at full load; 9% Maximum Total Input Harmonic Current Distortion (THD) at full load.

** Nominal Input Power Factor 0.92 lagging at full load; 4% Maximum Total Input Harmonic Current Distortion (THD) at full load.

Table 2 Site planning data—480V input

UPS Rating		AC Output Voltage	Options	Bypass AC Input Current	Rectifier AC Input Current		Inverter or Bypass AC Output Current		Required Battery Disconnect Rating (A)	Max. Battery Current at End of Discharge (A)	% Efficiency at Full Load	Max. Heat Dissipation Full Load BTU/h (kWH)	Dimensions	Approx. Weight Unpacked	Floor Loading Distributed Loading
kVA	kW	VAC	Input Filter	Nom	Nom	Max	Nom	Max							
1000	900	480	No	1203	1369 *	1712	1203	1504	2500	2440	93	231,203 (67.7)	177x44x82 (4496x1118x2083)	16700 (7575)	309 (1509)
1000	900	480	Yes	1203	1125 **	1582	1203	1504	2500	2440	93	231,203 (67.7)		17550 (7961)	325 (1587)
See Notes (p. 1):			13	3,5,7,8,9,11,12	1,4,5,7,8,9,11,12		2,5,7,8,9,11,12		6	6,8,9,11,12	—	—	14	14	—

* Nominal Input Power Factor 0.85 lagging at full load; 9% Maximum Total Input Harmonic Current Distortion (THD) at full load.

** Nominal Input Power Factor 0.92 lagging at full load; 4% Maximum Total Input Harmonic Current Distortion (THD) at full load.

© 2003 Liebert Corporation
All rights reserved throughout the world. Specifications subject to change without notice.

© Liebert and the Liebert logo are registered trademarks of Liebert Corporation.
All names referred to are trademarks or registered trademarks of their respective owners.

SL-25150 (2/04) Rev. 0



Liebert Corporation
1050 Dearborn Drive
P.O. Box 29186
Columbus, OH 43229

Telephone: 1-800-877-9222
Facsimile: 1-614-841-6022
www.liebert.com

